

Image 1

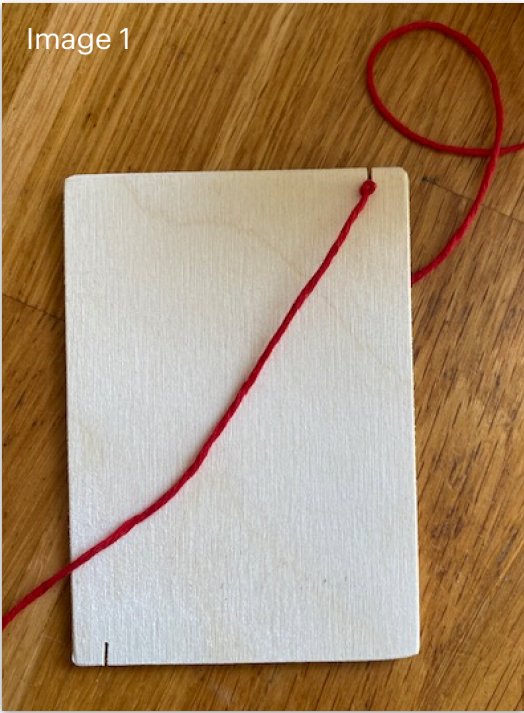


Image 2

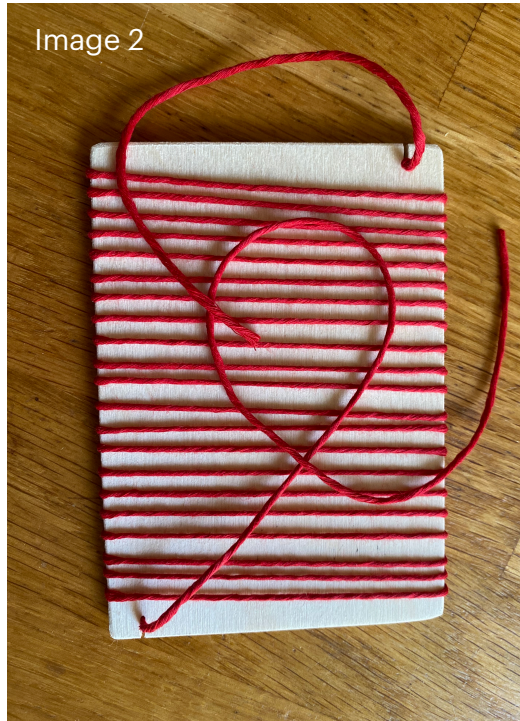


Image 3



Image 4

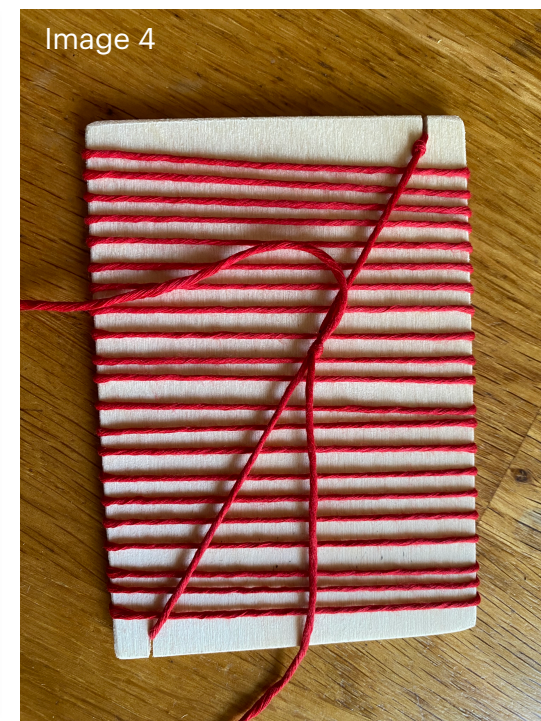


Image 5



Image 1

Tie an overhand knot in the Cotton Double Knitting yarn.

Image 2,3 &4

Wind round the front of the Mini Loom as shown in picture coming to the back and tying a reef knot. Right end over left and under then left over right and under keeping a strong tension to make a tight finish.

Image 5

If you want to make a portrait weave then you will need to wrap 14 wraps times in total.

If you want a landscape weave then you will need to wrap 22 wraps in total. This is called your WARP.

Image 6



Image 6 - 11

Use cotton yarn to weave over and under the first row.

Turn and repeat, weaving under and over to create a firm foundation and even tension.

Pull the Yarn at 45 degrees and gently pull the yarn back to the start point. Batt down the centre and then each hoop to gain an even tension that will not narrow as you progress.

Repeat these steps for a neat weave as you progress with different colours.

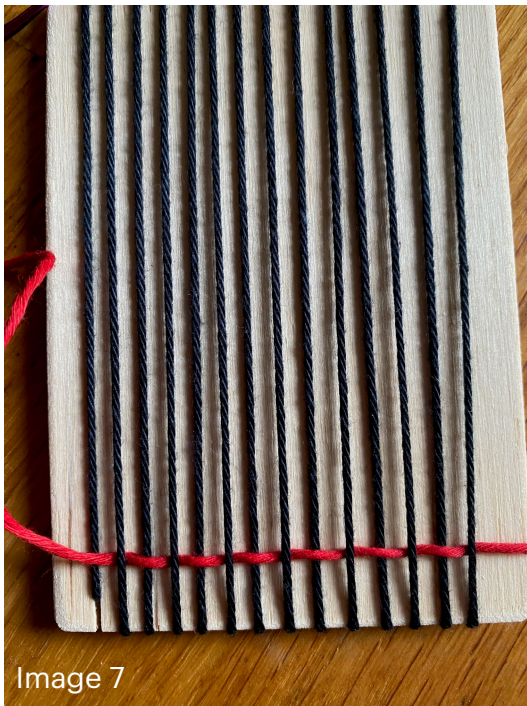


Image 7



Image 8



Image 9



Image 10



Image 11

Image 12

You can weave colours in any order. You can weave halfway across in one colour and finish with another to create stripes.

Leave any loose yarn at the edges until the end. Then, use a needle to thread it behind your design and pull the yarn through to the front. Very carefully trim the excess yarn neatly.

Your own Mini Weave that can be sewn to any garment or joined together with lots of other Mini Weaves. Lovely to have in your bag as an alternative to scrolling!

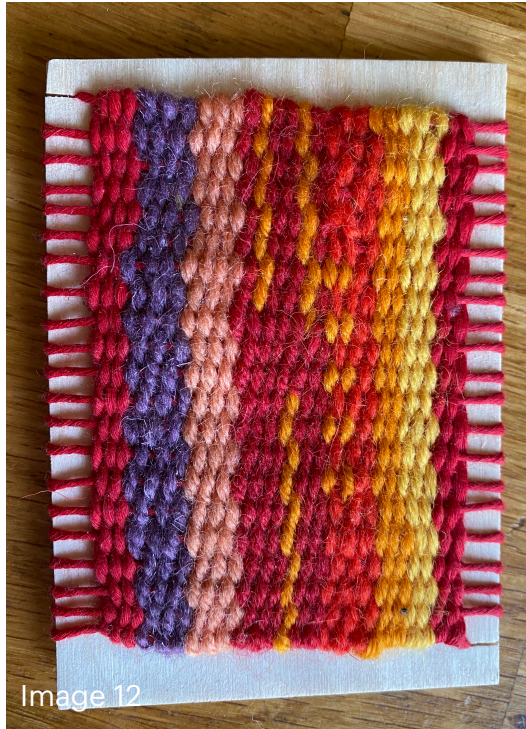


Image 12





Image 13



Image 14



Image 15



Image 16



Image 17

Image 13

Cut across the warp threads at back of loom.

Image 14

Feed each loose thread gently with the needle through the back weft rows as illustrated. Gently pull until thread has no loop at the top.

Image 15 - 17

At the ends of the warp take 2 strands and make an overhand knot. Put the needle in the knot up against the weave and gently pull ensuring knot is at Bottom of the Weave.

Image 18

Trim the excess yarn off for neat finish.

Image 19

Ready steady go again



Image 18



Image 19

The warping and weaving process for the A6 and A5 looms is the same as for the mini A7 loom. The main difference is simply the number of warp threads required to fill the larger space.

- **A6 Loom** — approximately **22 warp threads** using cotton double knitting yarn.
- **A5 Loom** — approximately **36–40 warp threads**.

If using **cotton double knitting yarn**, we suggest using around **36 warp threads** on the A5 loom.

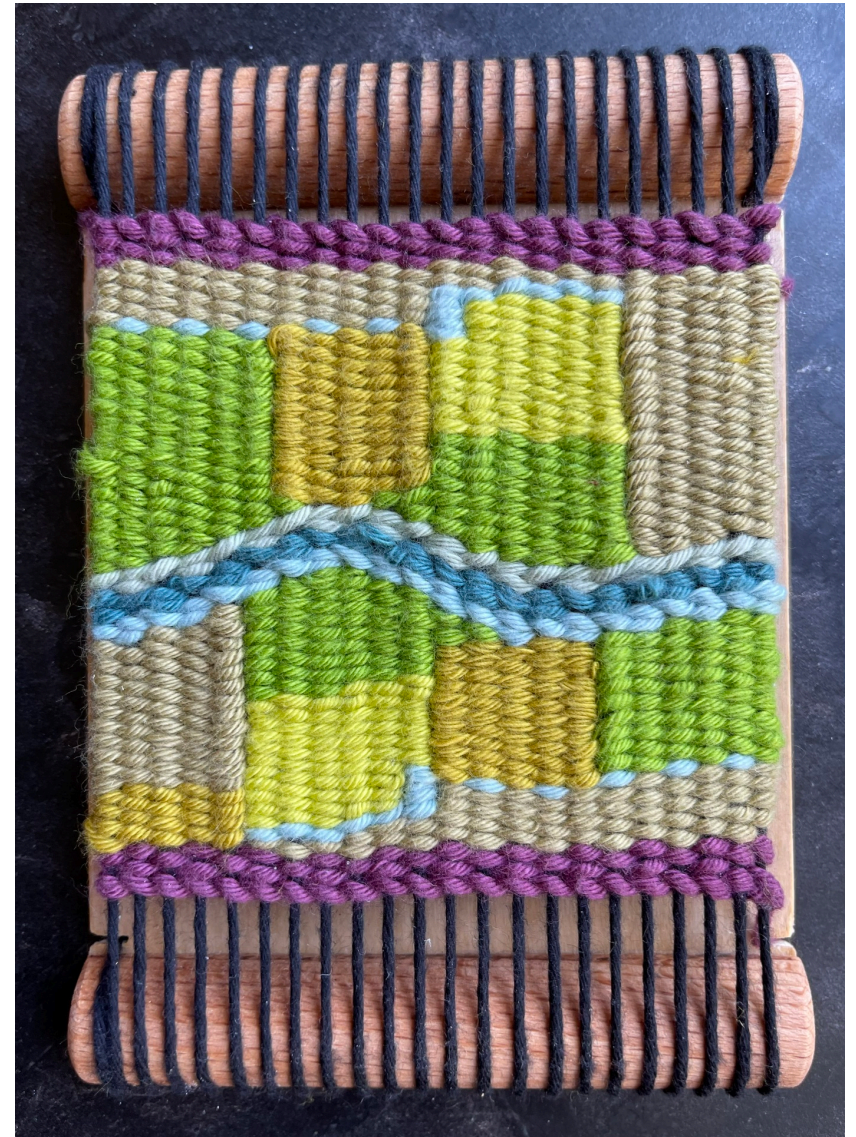
If using a finer yarn, such as **Liina cotton warping yarn**, we recommend **40–42 warp threads**. A suggested fineness is **Liina 9**. (Finer warp yarns suit finer weft yarns in tapestry weaving.)

You can find suitable Liina warp yarn here:

[Weavers Bazaar – Liina Undyed Cotton Warp](#)

If you have any questions, please feel free to contact us at:

letstalk@thewigglypathcompany.com



A6 Small Loom



A5 Medium Loom